

Technical Specification

Product fiche

Trademark	Sharp
Model ID	LC-24CHG6001KF LC-24CHG6002KF LC-24DHG6001KF LC-24DHG6001KFP LC-24DHG6001KFR LC-24DHG6001KFW
Energy efficiency class	A
Visible screen size (diagonal)	60 cm / 23.6 inches
On-mode power consumption	25.0 W
Annual energy consumption *1	37 kWh
Standby power consumption *2	<0.50 W
Off mode power consumption	n/a
Screen resolution	1366 (H) x 768 (V)
*1: Energy consumption XYZ kWh per year, based on the power consumption of the television operating 4 hours per day for 365 days. The actual energy consumption will depend on how the television is used. *2: When the TV is turned off with the remote control/standby button and no function is active.	

	LC-24CHG6001KF LC-24CHG6002KF	LC-24DHG6001KF LC-24DHG6001KFP LC-24DHG6001KFR LC-24DHG6001KFW
RF	75 ohm Antenna / Analog / DVB / Satellite*	
Inputs	2 x HDMI, 2 x USB, 1 x SCART, 1 x Mini Component/YpPr, 1 x Mini AV IN - Composite Video/CVBS and L/R Audio shared for Composite Video and Component/YpPr, 1 x RJ45 LAN/Ethernet	
Sound Outputs	1 x Digital Optical Audio output, 1 x 3.5mm Headphone	
Speaker / Amplifier Watts (RMS)	2 x 5 / 2 x 3	
Voltage and power consumption	AC 220V ~ 240V; 50Hz 25/40W (ecomode/max) (<0.5W in Standby)	AC 220V ~ 240V; 50Hz 25/50W (ecomode/max) (<0.5W in Standby)
Dimensions including stand (mm)	560W x 386H x 140D	
Net weight (Kgs)	4.4	4.3
Wall Mounting	VESA 100 x 100 (mm)	

*The Satellite input is for the LC-24CHG6002KF model only.

SHARP

Quick Start Set Up Guide

For information on using the TV's features, please refer to the operating Instructions.

Model Numbers

LC-24CHG6001KF
LC-24CHG6002KF
LC-24DHG6001KF
LC-24DHG6001KFP
LC-24DHG6001KFR
LC-24DHG6001KFW

Register your manufacturers guarantee online within 14 days of purchase at www.registertoday.co.uk/sharp and enter into a prize draw to



Quick & easy guide for setting up your TV

What is included in the box

Using the remote control

Setting up the TV for the first time - including attaching the stand

Connecting other devices to the Television

Need help setting up or using your TV?

Please contact the UK & ROI Helpline*

Telephone UK 0330 024 0803 or ROI 01443 3323

Online support at: www.umc-uk.co.uk

Email support at: service@umc-uk.co.uk

*Calls to 0330 numbers are charged at standard call rates and are included as part of any bundled minutes with your phone provider.

Calls to the ROI number are charged at the local call rate.

The telephone opening hours are Monday to Friday 8.30am to 6pm, Saturday 9am – 5pm.

Bank Holidays - 10am to 4pm

Closed Christmas and New Years day



Please save your box/packaging as you will need this in the event of warranty/service repair or support. We are unable to carry out warranty/service if you are unable to package it correctly. The safest way to package your item in the event of warranty/service repair is in its original box/packaging.

Freeview HD
To receive Freeview HD channels, in particular Freeview HD channels, you will need a Digital TV aerial and be in a good Freeview coverage area. You can check coverage for your postcode at www.freeview.co.uk.
Please note that any Freeview HD channels found during tuning will be placed in channel positions above 100. For example, 101 (BBC1 HD), 102 (BBC2 HD), etc.

Freeview Play
Freeview Play brings together live TV viewing with "catch up" TV services such as BBC iPlayer, ITV Player, More4 and Demand 5. The Freeview Play app features a carousel of genres to select from when searching for programmes, such as sport, comedy, dramas and soaps, etc. Content is made up from recommendations of the major broadcasters and offers an alternative means of searching.
Note that to use the full functionality of Freeview Play your set must be connected to the internet.

See our great range of tested and compatible PVR ready USB memory sticks at www.umc-uk.co.uk/usb
Your TV has a built in Personal Video Recording function, meaning you can set up recordings from the TV guide directly onto a PVR ready USB memory stick. You can also pause live TV and rewind/fast forward through your recordings.

Connecting Component/YpPr - you will need both the Mini YpPr Cable and the AV cable will be used for audio (Red/White while Yellow stays unconnected).
Connecting Composite/AV - Mini Composite/AV Cable will be enough for both video and sound.

Mini Composite/AV Cable
Required if you wish to connect a device with AV/Composite/CVBS output to the TV's Mini AV Input
Mini YpPr Cable
Required if you wish to connect a device with YpPr/Component output to the TV's Mini YpPr Input

Should you wish to connect older/analogue devices to your television, you can purchase the necessary cables either from your retailer or at www.umc-uk.co.uk/cables

Additional Accessories
1 x Quick Start Guide
1 x TV
2 x AAA Batteries
1 x RF Cable
(Includes stand base, stand neck & screws)

Accessories included with this TV are the following accessories

What is included in the box

Using the remote control



If you wish to use your Sky remote to operate the TV's basic functions, you will need a Sky remote control (Revision 9 or later) and you will need to program it with the code 2134. If you wish to use your Sky Q remote to operate the TV's basic functions, you will need to program it with the code 4170.

Sky Remote Code



- 1** STANDBY - Switch on the TV when in standby or vice versa.
FREEVIEW PLAY - Access the Freeview Play app.
- 2** NUMBER BUTTONS - 0-9 to select a TV channel directly.
MUTE - Mute the sound or vice versa.
TV GUIDE - Opens the 7 day TV guide (digital TV mode).
- 3** VOL (+/-) - To increase/decrease the sound level.
PICTURE - Scrolls through picture mode options.
SOUND - Scrolls through sound mode options.
SOURCE - To display the input/source menu.
CH (+/-) - To increase or decrease the channel being watched.
MENU - To display OSD menu.
EXIT - To exit all menus.
(▲/▼/←/→/OK) - Allows you to navigate the on-screen menus and adjust the system settings to your preference.
BACK - To go back a previous step.
FAV - To display favourites menu.
- 4** INFO - Press once for now/next channel information.
- Press twice for information about the current programme.
TEXT - To enter/exit Text.
SUBTITLE - To switch the dialogue at the bottom of the screen (on/off).
TV - To switch to Digital Channels.
YOUTUBE - Access the YouTube App.
NETFLIX - Access the Netflix App.
APPS - Access the APPS menu.
RECORD - Access the USB record function.
REC LIST - Opens the list of previously recorded items.
▶▶ - To advance forward to the next chapter
◀◀ - To restart the current chapter
▶ - To stop the playback/Eject Disc
(To EJECT the disc press/hold the ■ button for 4 seconds)
◀ - To play in fast rewind mode
▶ - To play in fast forward mode
⏸ - To play/pause
GO TO - To go to a specific chapter.
A-B - Press once to set point, press a second time to return to point.
ANGLE - Select different angle of DVD.
▶▶▶ - REPEAT - To repeat playback.

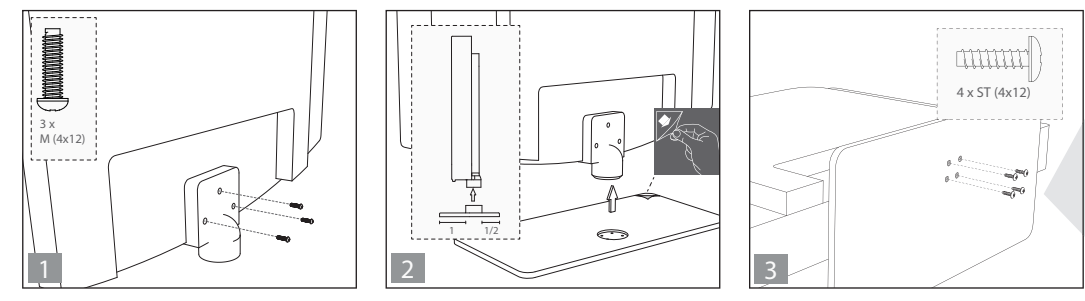
Setting up the TV set for the first time

To obtain a copy of your Operating Instructions, please go to: www.umc-uk.co.uk/instruction-manuals/sharp

1 Fitting the stand

For stand installation, there are two types of screws provided as shown below. To complete the stand installation you will require a cross head screw driver. Place the TV set on a flat and clean surface with the panel facing downwards to avoid damage.

- 3 x M (4x12)**
Used for attaching the stand neck to the TV (fig.1)
- 4 x ST (4x12)**
Used for attaching the stand base to the stand neck (fig.3)



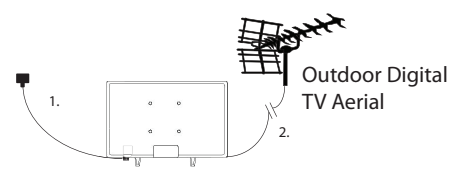
HELPFUL ADVICE FOR FIRST TIME STAND INSTALLATION

When securing the self-tapping screw/s into the base of the stand (on first installation) the screw/s will be naturally tight as they create a thread in the plastic of the stand neck in order to support a TV of this size.

- Ensure the cross head screw driver tip fits correctly into the head of the screw and that it is not too big or small.
- Screw in all screws individually and partially before tightening all of the screws fully.
- If they become very tight try loosening them slightly and then re-tightening them once again as this will continue the process of creating the thread for the screws.

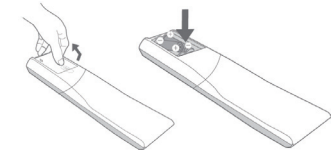
1. (fig.1) Attach the stand neck to the rear of the TV set using the 3 x M(4x12) screw. (fig.2) Peel off the protective plastic cover then attach the stand base to the stand neck. (fig.3) Secure the base to the neck by using the 4 x ST(4x12) screws provided.

2 Connecting your set



- 1) Connect the TV to your power socket.
- 2) If you wish to use the TV to receive Freeview/Saorview channels, connect the RF input from the TV to your outdoor Digital TV aerial. If you do not wish to receive Freeview/Saorview, skip this step.

3 Installing Batteries



Insert the batteries supplied into the remote control and press the standby button to power on the TV.

Button layout

- 1 Stop/Eject DVD*
 - 2 Play/Pause DVD*
 - 3 Volume up and menu right
 - 4 Volume down and menu left
 - 5 Programme/Channel up and menu up
 - 6 Programme/Channel down and menu down
 - 7 Displays Menu/OSD
 - 8 Displays the input source menu
 - 9 Standby Power On/Off
- *For models with built in DVD player

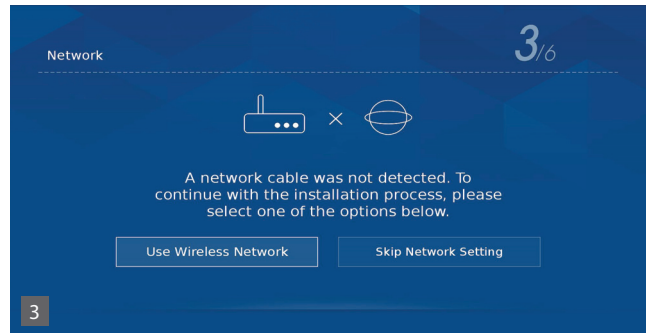
4 First time installation



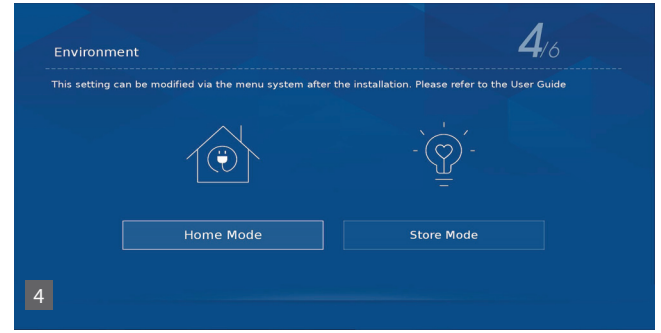
1. Languages
Select your preferred on screen display language. This will change the language in which the menus and associated information is displayed in. When set up has been completed, this can be changed by selecting Menu > Settings > Language



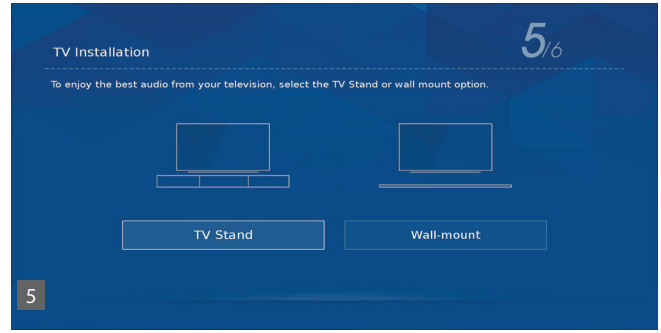
2. Country Selection
Select the correct flag for the country in which the set will be used in. This will enable the set to correctly install the functions applicable in the country of use.



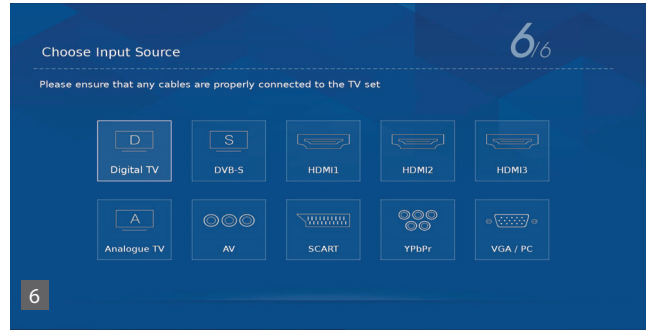
3. Network setup You can connect the TV to your broadband router or wireless network in order to take advantage of the Smart functions. If you connect the TV to your router using an Ethernet cable (recommended) this step will be skipped. Follow the on screen prompts to connect to your wireless network. You can set up the Network connection later in the network menu.



4. Environment of Use
Home Mode: For normal use, by default it is set to a power saving mode which reduces the energy used by up to 25% (by reducing the power to the LED/LCD panel). This can be changed in the picture mode settings.
NOTE: In Home Mode, the TV will switch itself to the standby mode after 4 hours in the event that the buttons on the remote control or TV set are not used.
Store Mode: For store display use. The picture is adjusted to optimum settings. The store demonstration will appear on the screen automatically after two minutes.



5. TV Installation – Audio.
Depending on how you use / install your TV, select the appropriate setting. The sound settings on the TV will adjust to suit the type of installation.



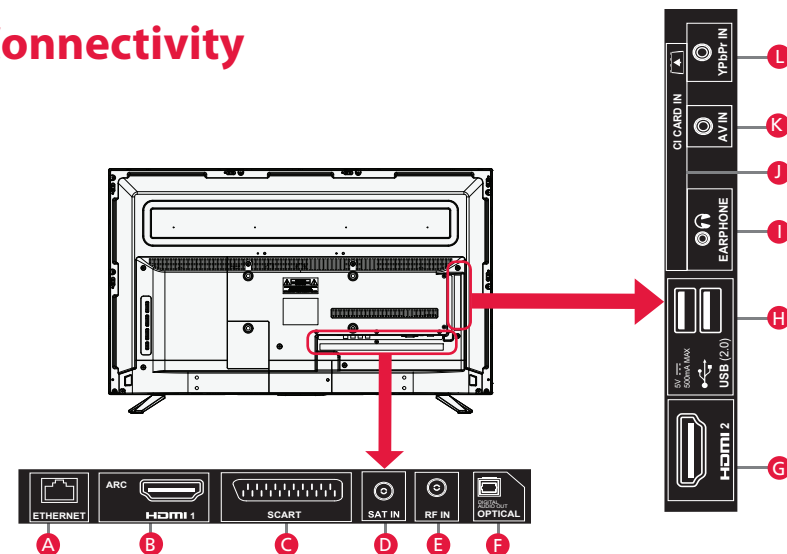
6. Default Source
Select the source which you use the most. If Digital TV (Freeview) is chosen, then at the next step, the set will tune in and default to Digital TV (Freeview). If one of the other sources is selected, then the set will not tune in at this stage and default to that input. If it is required to tune the set in later, this can be achieved by selecting Menu > Channels

Win a SHARP Soundbar

Register your manufacturers guarantee online within 14 days of purchase at www.registertoday.co.uk/sharp and enter into a prize draw to win a Sharp Soundbar
Terms and conditions apply. Online registration only.



Connectivity



A	ETHERNET*	Network connection	G	HDMI 2	HDMI Input
B	HDMI 1 (ARC)	HDMI input	H	2 x USB	USB Port
C	SCART	SCART Input	I	Earphone	Earphone Input
D	SAT IN**	Satellite input	J	CI CARD IN	Common Interface module
E	RF in	RF / TV aerial input	K	AV IN	Audio/Visual Input
F	Optical Digital Audio	Digital Audio Output	L	YPbPr	HD input (Ypbr)

* The Ethernet/LAN port is used for Freeview HD services and smart functions.
** The Satellite input is for the LC-24CHG6002KF model only.